



Kit Installation Manual

**EG-3P Actuator Installation
on Detroit Diesel V-71 & V-92 Engines**

Manual 54003 (Revision A)

WARNING—DANGER OF DEATH OR PERSONAL INJURY



WARNING—FOLLOW INSTRUCTIONS

Read this entire manual and all other publications pertaining to the work to be performed before installing, operating, or servicing this equipment. Practice all plant and safety instructions and precautions. Failure to follow instructions can cause personal injury and/or property damage.



WARNING—OUT-OF-DATE PUBLICATION

This publication may have been revised or updated since this copy was produced. To verify that you have the latest revision, be sure to check the Woodward website:

www.woodward.com/pubs/current.pdf

The revision level is shown at the bottom of the front cover after the publication number. The latest version of most publications is available at:

www.woodward.com/publications

If your publication is not there, please contact your customer service representative to get the latest copy.



WARNING—OVERSPEED PROTECTION

The engine, turbine, or other type of prime mover should be equipped with an overspeed shutdown device to protect against runaway or damage to the prime mover with possible personal injury, loss of life, or property damage.

The overspeed shutdown device must be totally independent of the prime mover control system. An overtemperature or overpressure shutdown device may also be needed for safety, as appropriate.



WARNING—PROPER USE

Any unauthorized modifications to or use of this equipment outside its specified mechanical, electrical, or other operating limits may cause personal injury and/or property damage, including damage to the equipment. Any such unauthorized modifications: (i) constitute "misuse" and/or "negligence" within the meaning of the product warranty thereby excluding warranty coverage for any resulting damage, and (ii) invalidate product certifications or listings.

CAUTION—POSSIBLE DAMAGE TO EQUIPMENT OR PROPERTY



CAUTION—BATTERY CHARGING

To prevent damage to a control system that uses an alternator or battery-charging device, make sure the charging device is turned off before disconnecting the battery from the system.



CAUTION—ELECTROSTATIC DISCHARGE

Electronic controls contain static-sensitive parts. Observe the following precautions to prevent damage to these parts.

- Discharge body static before handling the control (with power to the control turned off, contact a grounded surface and maintain contact while handling the control).
- Avoid all plastic, vinyl, and Styrofoam (except antistatic versions) around printed circuit boards.
- Do not touch the components or conductors on a printed circuit board with your hands or with conductive devices.

IMPORTANT DEFINITIONS

- A **WARNING** indicates a potentially hazardous situation which, if not avoided, could result in death or serious injury.
- A **CAUTION** indicates a potentially hazardous situation which, if not avoided, could result in damage to equipment or property.
- A **NOTE** provides other helpful information that does not fall under the warning or caution categories.

Woodward Governor Company reserves the right to update any portion of this publication at any time. Information provided by Woodward Governor Company is believed to be correct and reliable. However, no responsibility is assumed by Woodward Governor Company unless otherwise expressly undertaken.

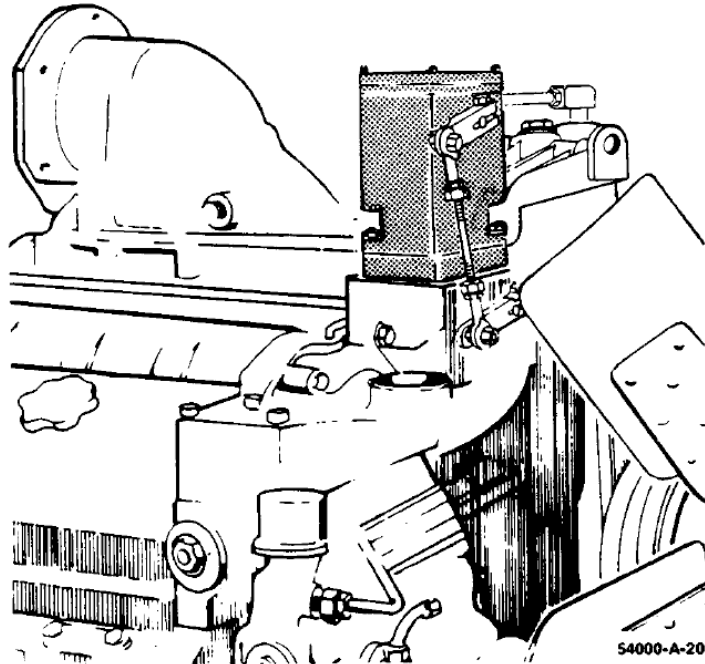
© Woodward 1982
All Rights Reserved

EG-3P Actuator Installation on Detroit Diesel V-71 & V-92 Engines

Introduction

These instructions are for the conversion from the Woodward SG governor to the Woodward EG-3P actuator.

For information about electric controls, see specific manuals:
25070, Electronic Control Installation Guide
82510, Magnetic Pickups and Proximity Switches for Electronic Controls
82560, EG-3P Actuator



Parts List

The installation kit is for use on the Detroit Diesel V-71 and V-92 engines with drives designed for the Woodward SG governor. The parts are sold in kit number 8956-143 which includes item 1 through 6. Items may be purchased separately.

When ordering installation replacement parts, give the following information.

- Manual Number 54003
- Part reference number, name of part, or description of part

Ref. No.	Part Name	Quantity
54003-1	Stud - 0.312 x 2.500 Body.....	2
54003-2	Nut 0.312-24 Hex (.434 A/F)	2
54003-3	Washer - 0.312 Helical Spring Lock	2
54003-4	Drain Adapter Gasket.....	1
54003-5	Rod - 0.312-24 x 6.875 (LH & RH)	1
54003-6	Bushing - Magnetic Pickup.....	1

**NOTE**

Items 7 through 16 are not made available by Woodward. They are normally included by the engine manufacturer as part of the SG governor installation arrangement.

Ref. No.	Part Name	Quantity
54003-7	Lever-Control Link Shaft	1
54003-8	Rod end LH .312-24.....	1
54003-9	Nut-Jam LH Thread 0.312-24	1
54003-10	Nut-Jam RH Thread 0.312-24.....	1
54003-11	Rod End RH 0.312-24.....	1
54003-12	Lever.....	1
54003-13	Lockwasher.....	2
54003-14	Screw - Hex Head.....	2
54003-15	Screw -5/16 - 18 x 7/8.....	2
54003-16	Lockwasher.....	2
54003-17-20	NOT USED	

Optional Parts Available from Woodward

Ref. No.	Part Name	Quantity
54003-21	Kit - EG-3P Connector Assembly.....	1
	Kit includes the following parts which may be ordered separately:	
54003-22	Plug - Elec Conn. Size 14.5 Straight...	1
54003-23	Clamp - MS 3057-6A Cable	1
54003-24	Bushing- MX 3420-6 Cable Clamp.....	1
54003-25-28	NOT USED	

Ref. No.	Part Name	Quantity
54003-29	Magnetic Pickup Assembly	1
	Kit includes the following parts which may be ordered separately:	
54003-30	Plug - MS 3106-A 105-L-45	1
54003-31	Clamp - MS 30574A Cable	1
54003-32	Bushing - MS 3420-4 Cable Clamp.....	1
54003-33	Magnetic Pickup	1

Figure 1 shows linkage connections and part reference numbers. Figure 2 shows the connector assembly. Figure 3 shows the magnetic pickup assembly.

For proper hydraulic connections to the EG-3P, see manual 82560.

Actuator Installation

See Figure 1 to install the EG-3P actuator on the engine.

1. Remove the SG governor from the engine.
2. Install the hold down studs (1) in the actuator pad.
3. Install drain adapter gasket (4) and EG-3P actuator on engine.
4. Install rod ends (8-11) and jam nuts (9-10) on new control rod (5).
5. Install the EG-3P "square" with the engine linkage. Linkage must move freely.
6. Attach rod end (11) to actuator output lever (12) (see Figure 1).

7. Attach output lever (12) to actuator and adjust travel.
8. Install oil line from the oil reservoir to either of two 1/8" pipe tapped inlet holes marked with an "S" on the base of the actuator. A minimum of 5 psi (34 kPa) oil supply pressure is needed. The supply should be filtered engine oil.
9. Include overspeed shutdown equipment separate from the speed control governor.

**NOTE**

The travel of the actuator output shaft from no fuel to full fuel is approximately 30°. The travel of the engine fuel rack from no fuel to full fuel is approximately 25°. Adjust linkage so the maximum stop of the actuator will prevent the fuel rack from traveling beyond the fuel position. Fuel injectors must move freely. Rotation is either cw or ccw as marked on the actuator.

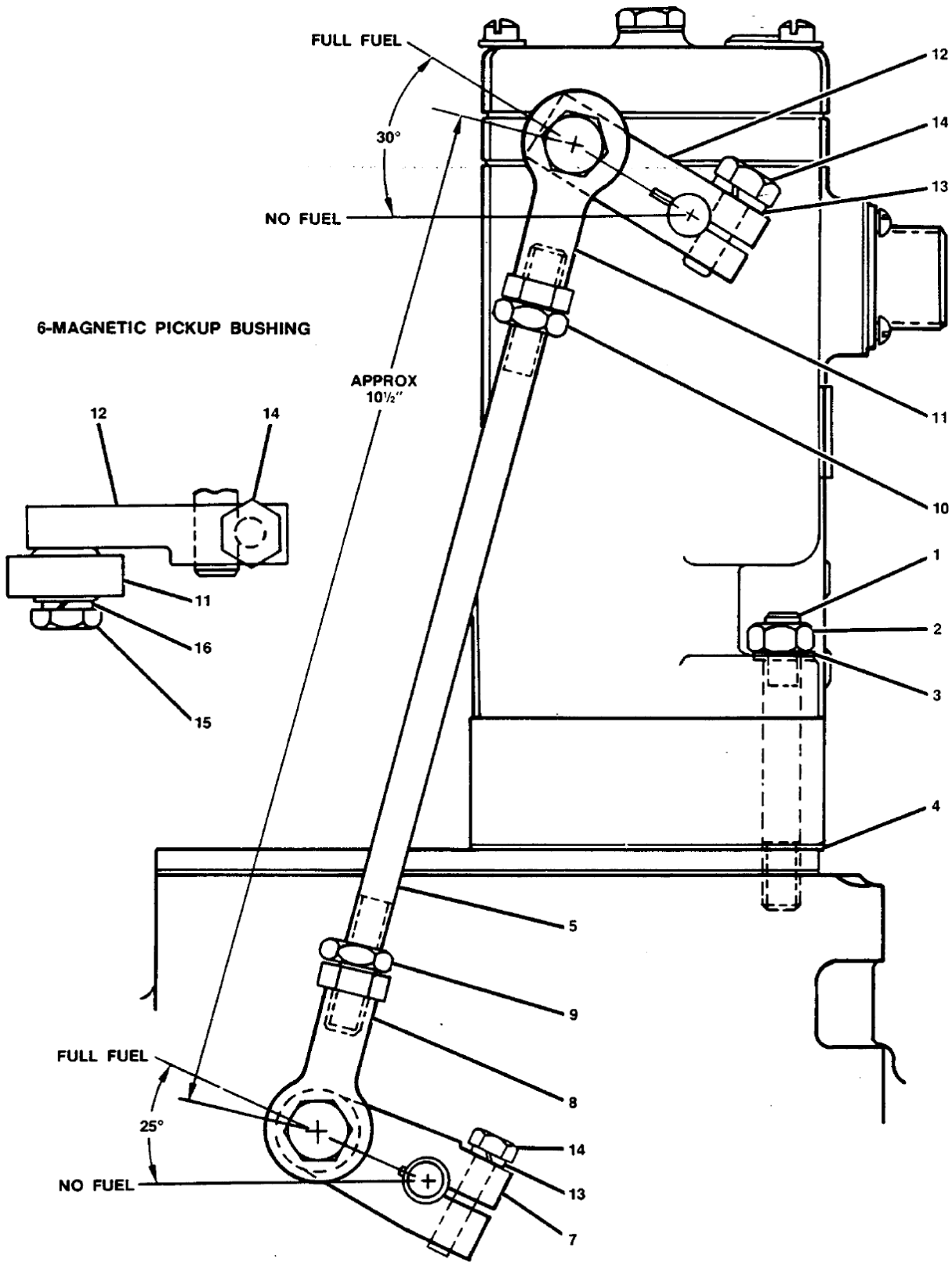
Magnetic Pickup Installation

1. Remove the pipe plug in the flywheel housing adjacent to the flywheel teeth.
2. Install the 1.000-111/2 NPTF magnetic pickup bushing in the flywheel housing.
3. Install the magnetic pickup in the bushing. The magnetic pickup is listed in optional parts list.
4. The distance between the pickup and the outside diameter of the gear should be approximately 0.040" (1.02 mm) at the closest point. This clearance must be kept through the full turn of the flywheel.

**NOTE**

Find the distance by turning the magnetic pickup in until it just touches the gear-tooth. Back it out about 3/4 turn (0.0555" [1.410] per one 360° turn ccw).

5. Tighten the jam nut. Be careful not to turn the magnetic pickup.



54000-A-29

Figure 1. Linkage Arrangement and Setup for Installing the EG-3P Actuator

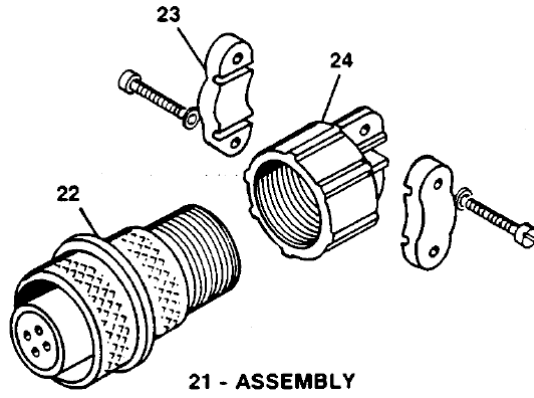


Figure 2. EG-3P Connector Assembly

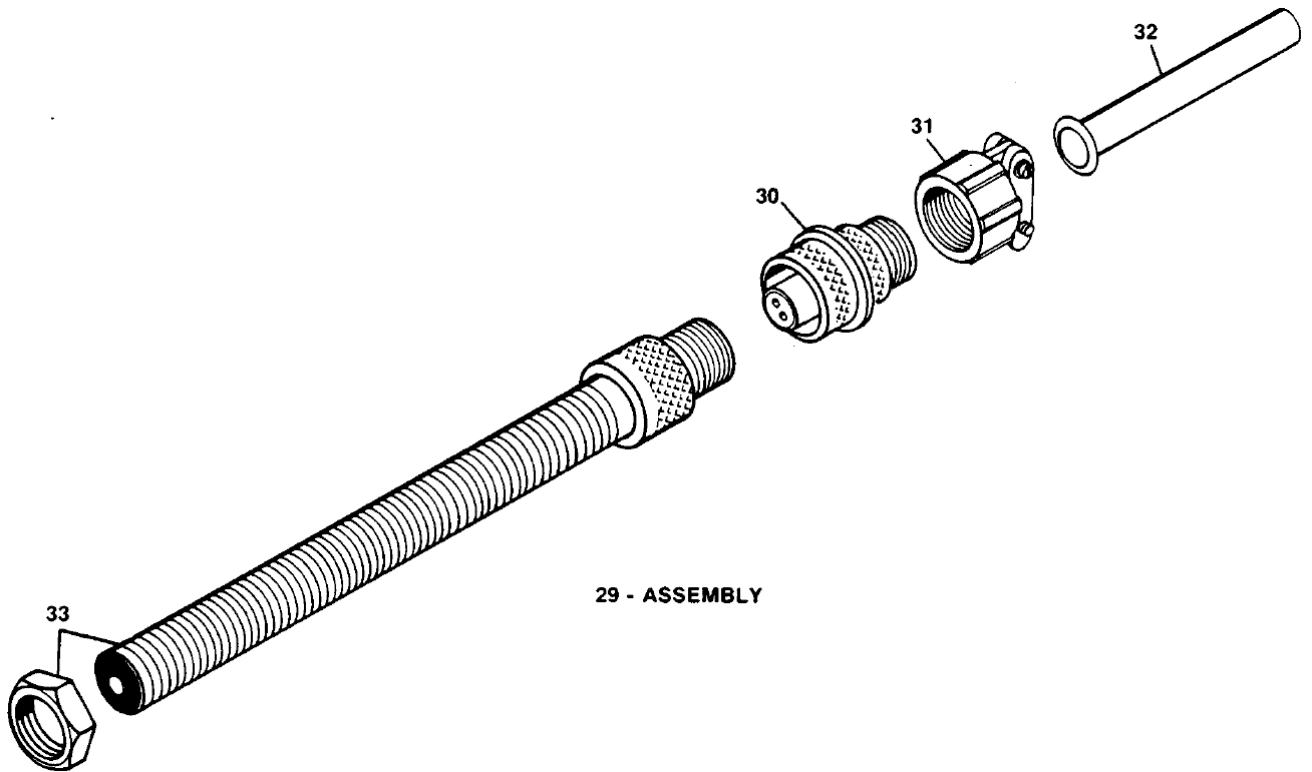


Figure 3. Magnetic Pickup Assembly

We appreciate your comments about the content of our publications.

Send comments to: icinfo@woodward.com

Please include the manual number from the front cover of this publication.



PO Box 1519, Fort Collins CO 80522-1519, USA
1000 East Drake Road, Fort Collins CO 80525, USA
Phone +1 (970) 482-5811 • Fax +1 (970) 498-3058

Email and Website—www.woodward.com

Woodward has company-owned plants, subsidiaries, and branches,
as well as authorized distributors and other authorized service and sales facilities throughout the world.

Complete address / phone / fax / email information for all locations is available on our website.